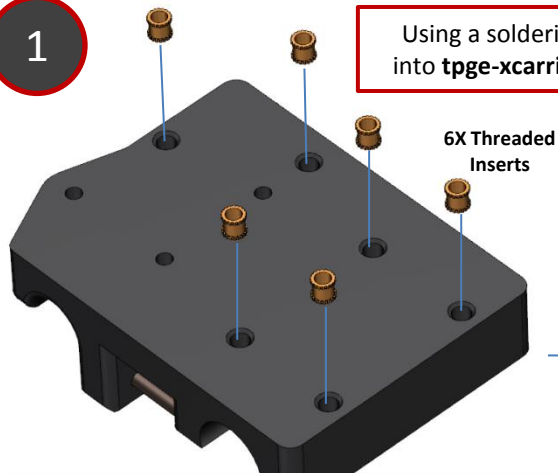
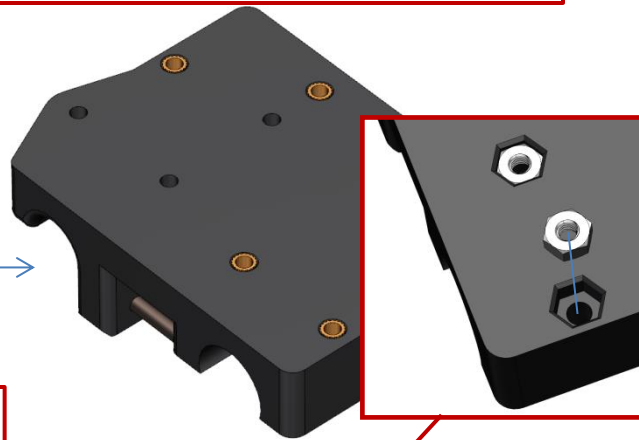


1

Using a soldering iron, Install 6x M3 x 4mmO.D. Brass Knurl Nuts into **tpge-xcarriage.stl**, be sure they are flush with bottom surface

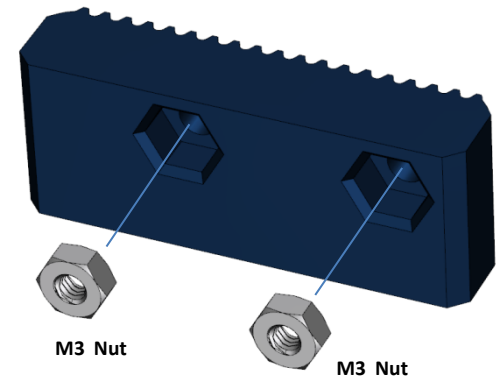


Note: After installing threaded inserts, run a long m3 screw through the insert and entire part in order to clear any melted plastic from the hole.



Note: For those who'd prefer to use M3 nuts instead of the M3 threaded inserts, print alternate part **tpge-xcarriage-w-m3nuts.stl**, and press-fit 6X M3 nuts into slots provided.

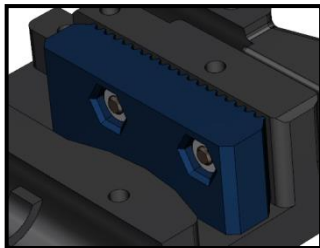
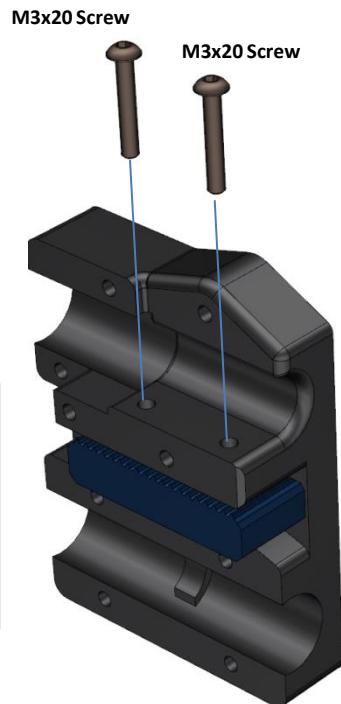
2



Press-fit 2x M3 nuts into **tpge-xcar-beltholder.stl**

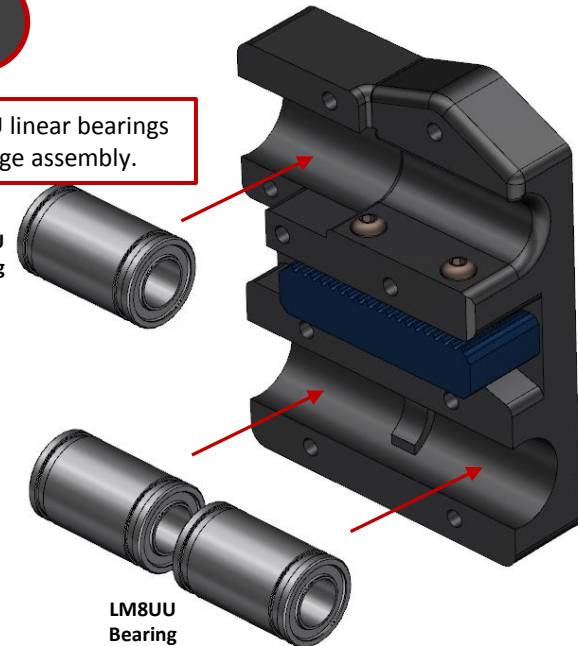
3

Install belt holder onto **tpge-xcarriage.stl** using to M3x20 pan head screws.



4

Snap 3X LM8UU linear bearings onto x-carriage assembly.

LM8UU
BearingLM8UU
BearingLM8UU
Bearing

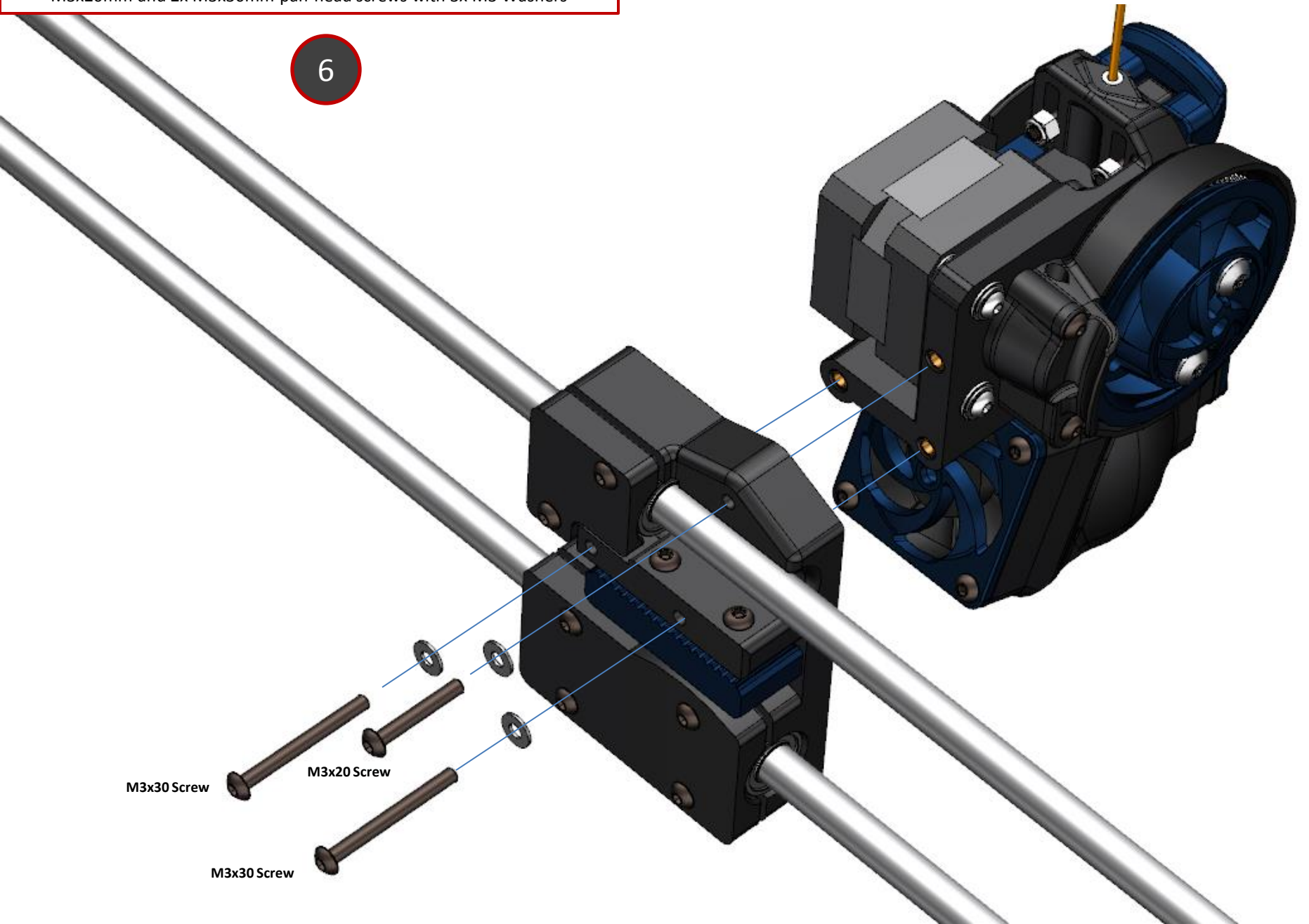
Attach the Toranado Precision Geared Extruder to the X-Carriage using a
M3x20mm and 2x M3x30mm pan-head screws with 3x M3 Washers

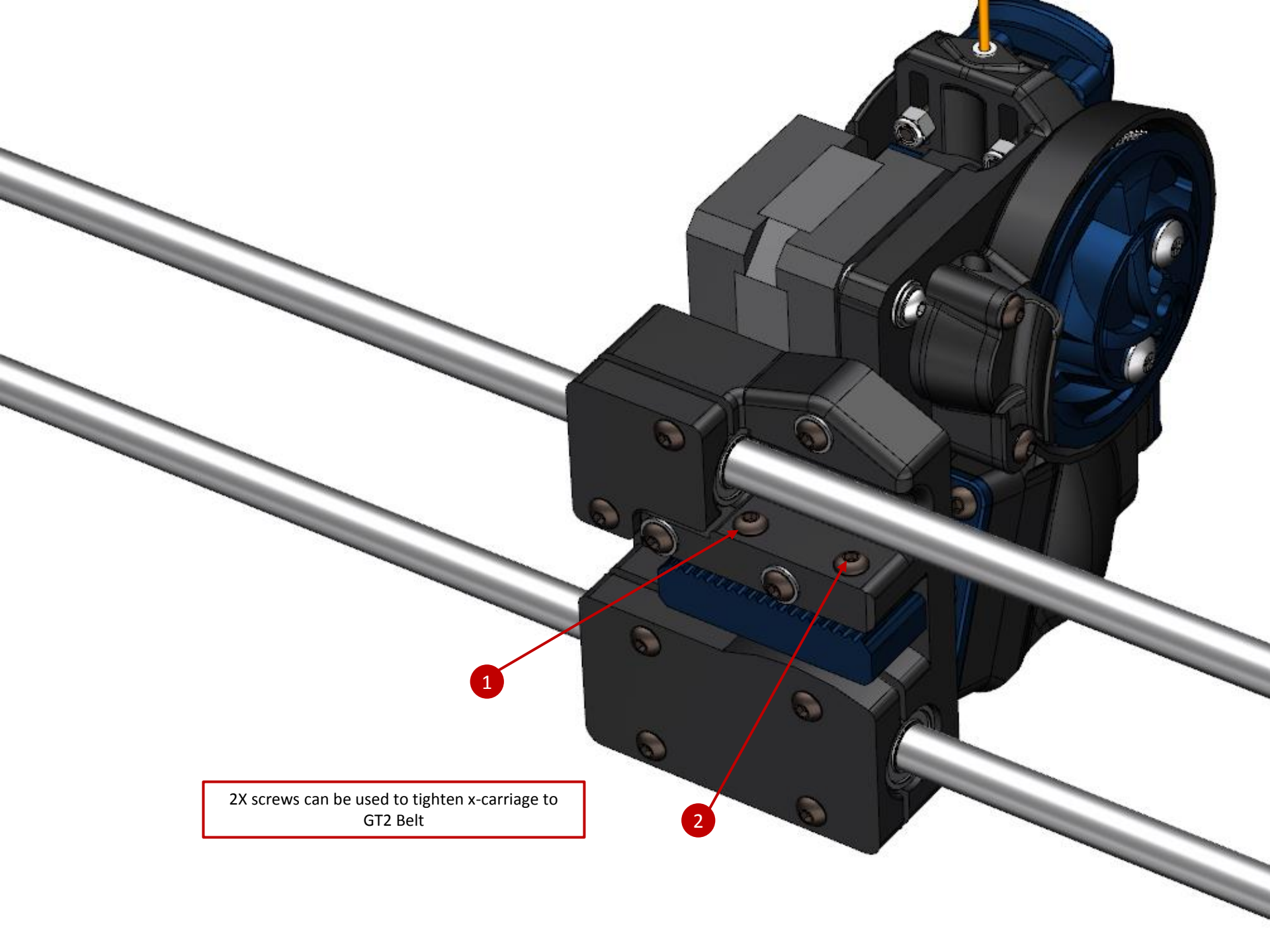
6

M3x30 Screw

M3x20 Screw

M3x30 Screw





2X screws can be used to tighten x-carriage to GT2 Belt